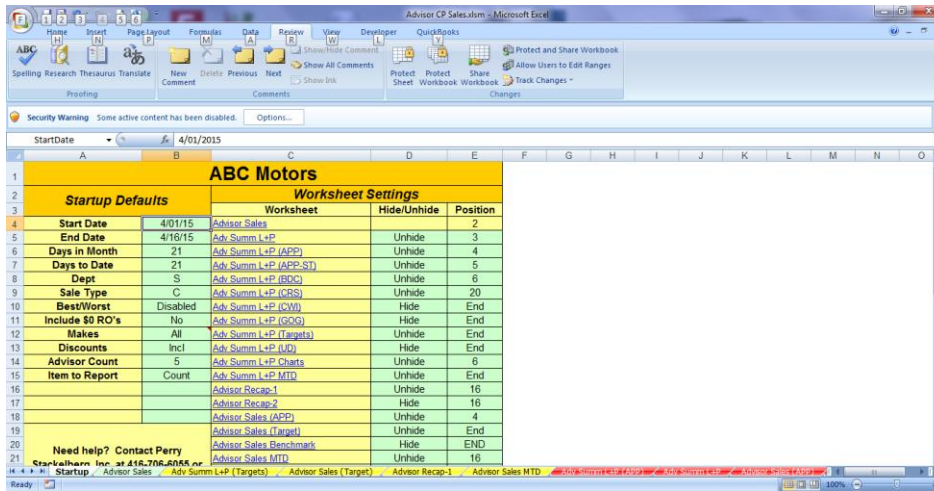


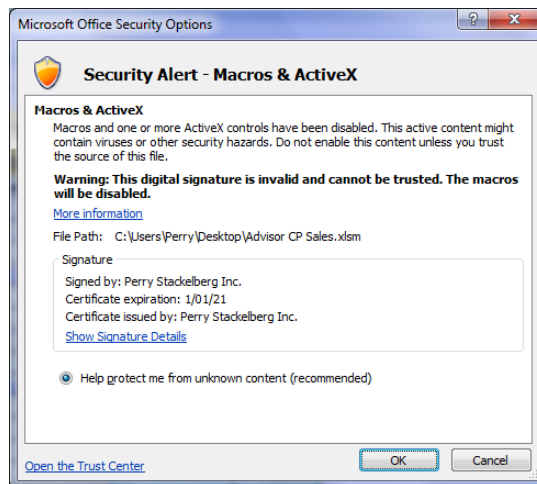
Installing a Digital Signature

Excel macros will be disabled until the digital signature is installed on your PC.

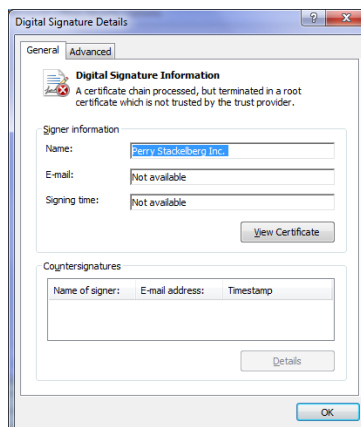
1. Look for the **Security Warning** just below the icons at the top of the screen. Click **Options**.



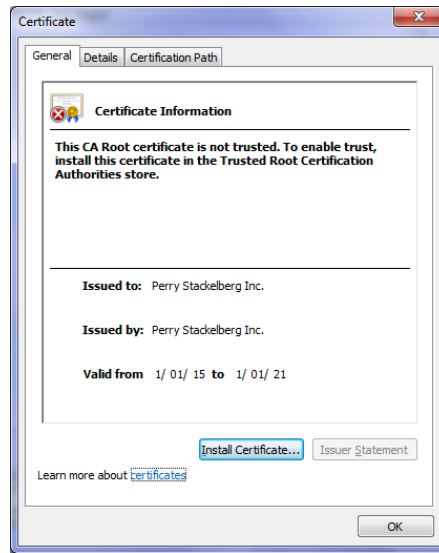
2. Click **Show Signature Details**.



3. Click **View Certificate**.



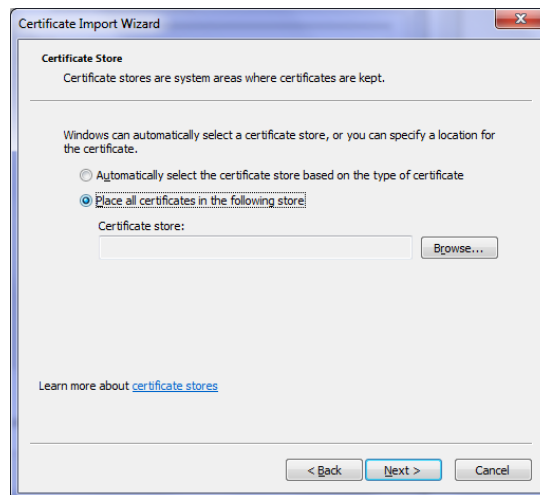
4. Click **Install Certificate**.



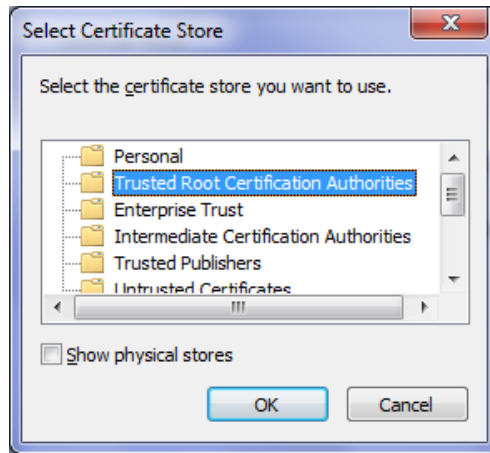
5. Click **Next**.



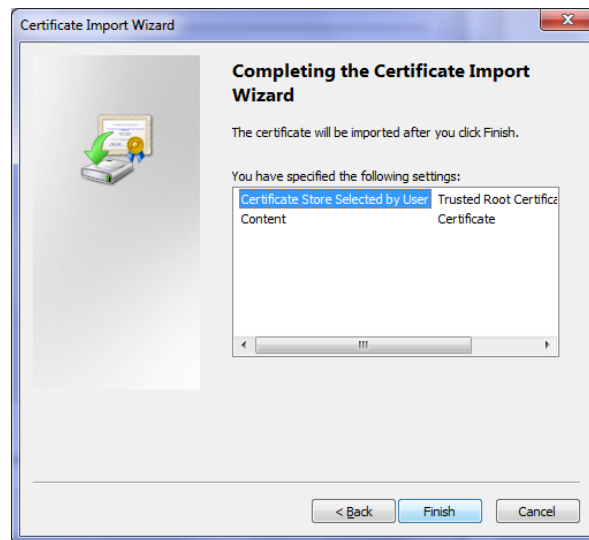
6. Click **Place all certificates in the following store**.



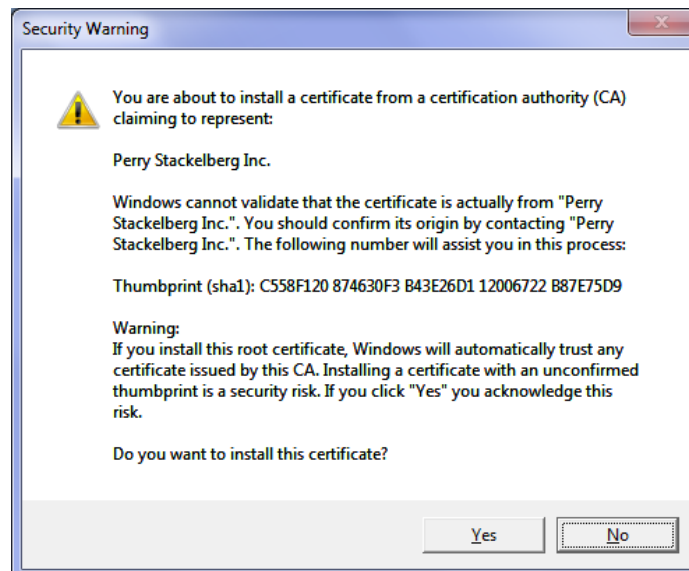
7. Click **Browse** and then select **Trusted Root Certification Authorities**. Click **OK**.



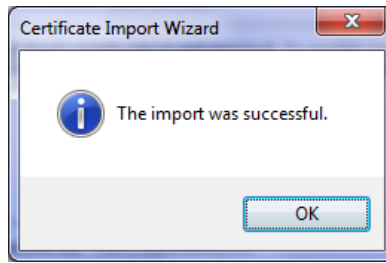
8. Click **Next** and then **Finish**.



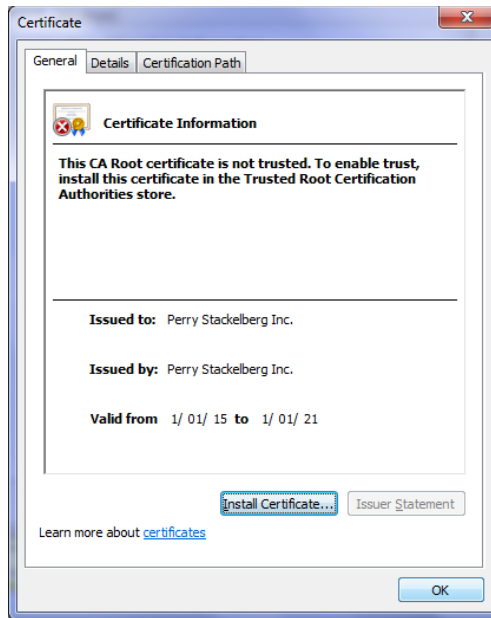
9. Click **Yes**.



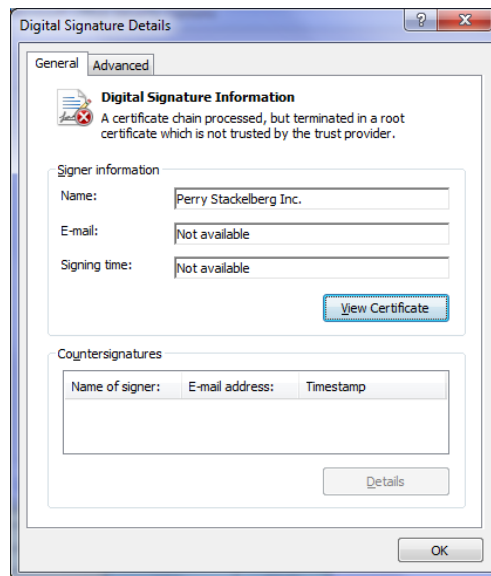
10. Click **OK**.



11. Click **OK**.



12. Click **OK**.



13. Click **Trust all documents from this publisher**.



14. The PSI licence agreement should display. This indicates that the macros will now run properly on this PC.

